

Pre-production image shown. Digitally generated image shown. Actual image may vary. See dealer for details.

2024

F-150® XL

[Change Model](#)

Paint ^{S4}

Color

Agate Black Metallic

Included

Secondary Color

Less Secondary Color

Included

2024 F-150® XL

Summary

\$46,265 ^{S2} , 49,514

\$900
~~\$528~~ ^{S6}

[Get an Internet Price](#)

[Search Inventory](#)

2 available in your area

2024 F-150® XL

Summary

Paint ⁵⁴

Agate Black Metallic	\$0
Less Secondary Color	\$0

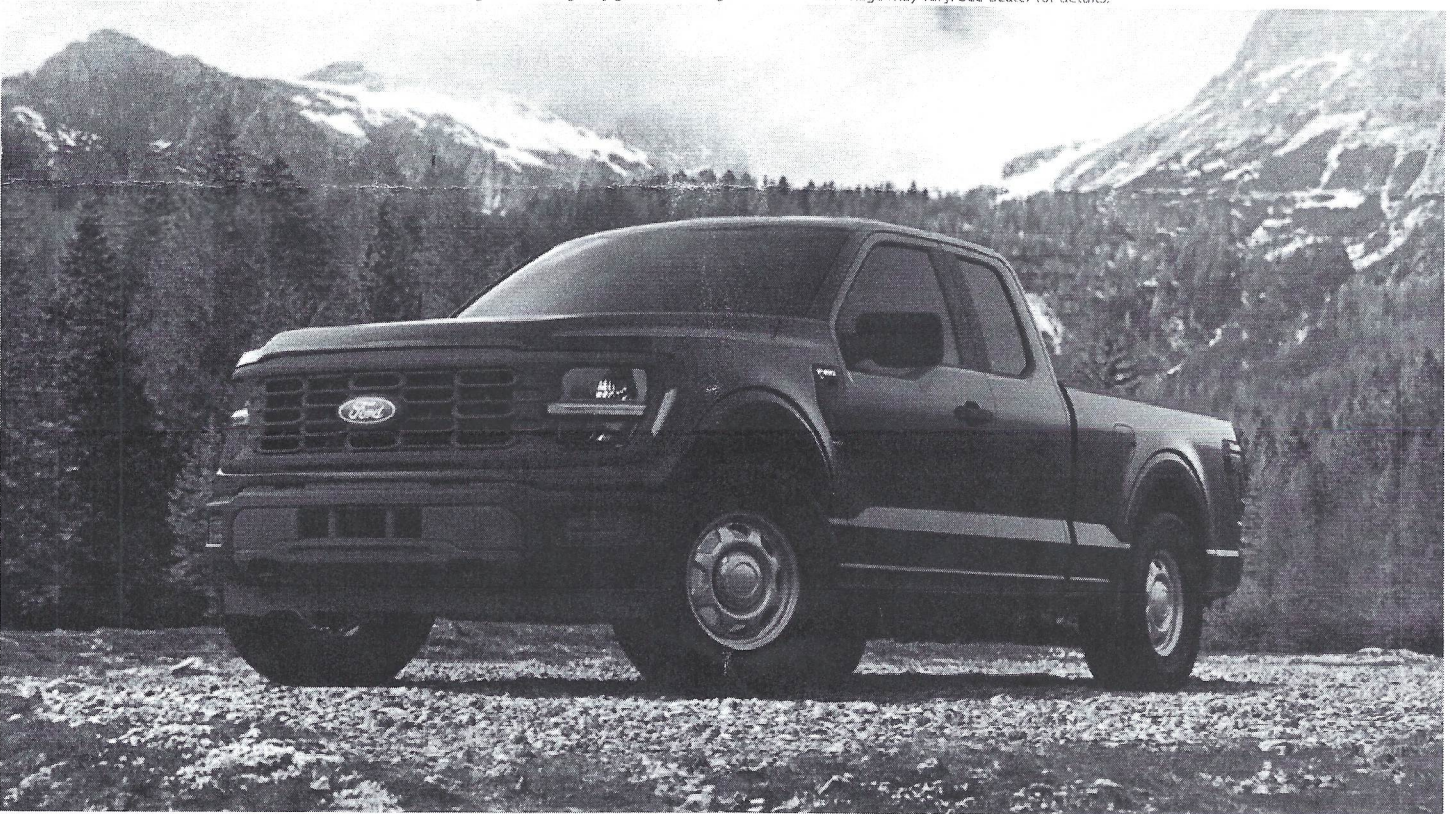
Powertrains ⁵⁴

3.5L V6 EcoBoost® with Auto Start-Stop Technology	\$1,660
4X2	\$0
Electronic Ten-Speed Automatic Transmission	\$0
3.55 Electronic Locking Axle Ratio	\$0

Packages ⁵⁴

XL (101A)	\$0
Tow/Haul Package	\$785

Pre-production image shown. Digitally generated image shown. Actual image may vary. See dealer for details.



Exterior ⁵⁴

17" Silver Steel Wheels	\$0
245/70R 17 BSW All-Season Tires	\$0
Tailgate Appliqué "FORD" Delete	\$0
Rear-Window with Fixed Glass and Solar Tint	\$0
Class IV Trailer Hitch	\$0
BLIS® with Cross-Traffic Alert	\$0
Reverse Sensing System	\$0
LED Reflector Headlamps	\$0
Manual-Folding, Power Glass with Heat and Black Skull Caps	\$0

Pre-production image shown. Digitally generated image shown. Actual image may vary. See dealer for details.



Interior ^{\$4}

<input type="radio"/>	Medium Dark Slate	\$0
<input type="radio"/>	Cloth – 40/20/40	\$0
<input type="radio"/>	Vinyl Floor Covering – Black	\$0
<input type="radio"/>	Day/Night – Rearview Mirror	\$0
<input type="radio"/>	2-Way Manual Driver and Front Passenger	\$0
<input type="radio"/>	Ford Co-Pilot360™ 2.0	\$0
<input type="radio"/>	Integrated Trailer Brake Controller	\$0
<input type="radio"/>	Steering Wheel – Manual Tilt/Telescoping and Manual Locking – Black Urethane Covering	\$0
<input type="radio"/>	12" Productivity Screen in Instrument Cluster	\$0
<input type="radio"/>	AM/FM Stereo	\$0
<input type="radio"/>	SYNC® 4 with Enhanced Voice Recognition	\$0
<input type="radio"/>	SiriusXM®	\$0

Get an Internet Price

Search Inventory

Pricing Summary

Base MSRP ^{\$1}	\$41,180
Options ^{\$4}	+ \$2,445

Accessories ^{S8}

+ \$0

Destination Charges ^{S17}

+ \$1,995

Acquisition Fee ^{S18}

+ \$645

Total MSRP ^{S16}

= \$46,265

Estimated Net Price ^{S5}

= \$46,265

Monthly Payment ^{S6}

\$528

Lease based on \$4,562 down payment, 48 month term and 10,500 mileage, \$0 trade-in-value. Customize payment.

doc fee +389
 Lien filling + 24
 Registration + 60
 6% + taxes
 2776

 3249
 46 265

 49,514 ~~50~~

Special Offers

Look Up Trade-In-Value >

Estimate Your Credit >

Get Prequalified >

42701

Bob Swope Ford
inc.
1.48 miles away
(270) 506-4377

Your Configuration: 2024 F-150 XL, SuperCab™, 3.5L V6 EcoBoost® with Auto Start-Stop Technology, Electronic Ten-Speed Automatic Transmission, 4X2, 3.55 Electronic Locking Axle Ratio
Pricing shown for Zip code 42701 as of May 04, 2024

Disclosures

Note. Information is provided on an "as is" basis and could include technical, typographical or other errors. Ford makes no warranties, representations, or guarantees of any kind, express or implied, including but not limited to, accuracy, currency, or completeness, the operation of the Site, the information, materials, content, availability, and products. Ford reserves the right to change product specifications, pricing and equipment at any time without incurring obligations. Your Ford dealer is the best source of the most up-to-date information on Ford vehicles.

Disclosures through S18 apply to Search Dealer Inventory, Request A Quote, Get An Internet Price, Get A Quote, Let Us Find It For You, Build & Price and Incentives & Offers.

S1. Manufacturer's Suggested Retail Price (also referred to as "MSRP", "Base MSRP", "Base Price" or the "Starting At" price), excludes destination/delivery charge, taxes, title, license, and registration and/or electronic filing fees, dealer fees, and total of options. For authenticated AXZ Plan customers, the price displayed may represent Plan pricing. Not all AXZ Plan customers will qualify for the Plan pricing shown and not all offers or incentives are available to AXZ Plan customers.

S2. Images shown are for information purposes only, and may not necessarily represent the configurable options selected or available on the vehicle. We cannot be responsible for typographical or other errors, including data transmission, display, or software errors, that may appear on the site.

S3. Offers shown may not be available to all customers. Incentives lists are examples of offers available at the time of posting and are subject to change and expiration. Not all incentives can be redeemed together. To take advantage of rebates, incentives and/or financing offers you must take new retail delivery from dealer stock by the expiration date noted. Not all buyers will qualify for Ford Credit financing or other offers. Restrictions apply. See your local dealer for complete details.

S4. The Option Package price and monthly payment displayed is for illustration purposes only. Prices and monthly payments may vary based on features included in package, financing terms and availability. Some Options are not available separately. Not all Options or Option Packages are available on all vehicles. See your local dealer for details.

S5. Estimated Net Price is the Total Manufacturer's Suggested Retail Price ("Total MSRP") minus any available offers and/or incentives. Incentives may vary. Excludes Dealer Adjustment, dealer add-ons, or dealer fees such as documentary fees, as well as taxes, title, and registration fees. For authenticated AXZ Plan customers, the price displayed may represent Plan pricing. Not all AXZ Plan customers will qualify for the Plan pricing shown and not all offers or incentives are available to AXZ Plan customers.

S6. The payment estimator will calculate a monthly payment based on the MSRP of the vehicle you have configured, including the dealer-installed accessories. For authenticated AXZ Plan customers, the price displayed may represent Plan pricing. Not all AXZ Plan customers will qualify for the Plan pricing shown. Actual monthly payment is based on a variety of factors, including differing financing or leasing terms, accessory prices and installation costs. Financing payment calculations are estimates only, and are based on amount of down payment, APR and term. Lease payment calculations are estimates only, and are based on an annual mileage calculation determined by your dealer. A charge is assessed for any mileage driven that exceeds this limit. Lessee is responsible for \$395 lease Disposition Fee in select states. Not all buyers will qualify for financing or a lease. Contact your local Ford or Lincoln Dealer for details.

S7. While dealer inventory is generally updated on a daily basis, there are no guarantees that the inventory shown will be available at the dealership. Mid-model-year manufacturing changes, as well as dealer-added accessories on the actual vehicle may differ from the options and features listed. Vehicles that are identified as 'Exact Matches' may have a different price or different features not represented on the site. We make every effort to provide you with the most accurate, up-to-date information, however, only your local Ford dealer can provide you with information regarding actual vehicle availability.

S8. Dealer Accessories are defined as items that do not appear on the factory window sticker that are installed by a Ford or Lincoln Dealers. Actual Prices for all accessories may vary and depend upon your dealer. Prices DO NOT include installation or painting, which may be required for particular items. Please check with your authorized dealer for complete pricing accuracy for all accessories and parts. Genuine Ford Accessories will be warranted for whichever provides you the greatest benefit: 12 months or 12,000 miles (whichever occurs first) or the remainder of your Bumper-to-Bumper 3-year/36,000-mile New Vehicles Warranty. Contact your local Ford, Lincoln or Mercury dealer for details and a copy of the limited warranty. Ford Licensed Accessories (FLA) are warranted by the accessories manufacturer's warranty. Contact your Ford, Lincoln or Mercury Dealer for details regarding the manufacturer's limited warranty and/or a copy of the